

**Description of function:**

The electric window locking device is a locking device, which open the locking hook and release the locking bolt by control "open". After control "close" the locking bolt can snap in into the locking device again. A additional voltage supply for locking isn't necessary.

**Technical data:**

static locking force	1250N
rated voltage	24VCD
no-load current	0,5A
max. breaking current (overload cut-off)	1,1A
protection class according to DIN EN 60 529	IP54
opening time under full load	ca. 5sek
ambient temperature range	-20°C - +60°C
connection	light grey silicone connection cable (length 2,5m)

**Technical information:**

Take care that the upstream control has a OPEN-CLOSE function. If the window locking device is used in connection with a electric 24V-actuator, an extra follow-up control type FGS shall be provided. Take also care, that the upstream control has a Auto-CLOSE function (specifically in connection with devices without ventilation function).

**Rated current:**

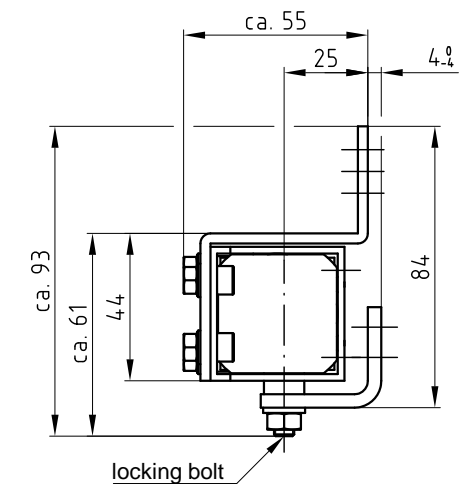
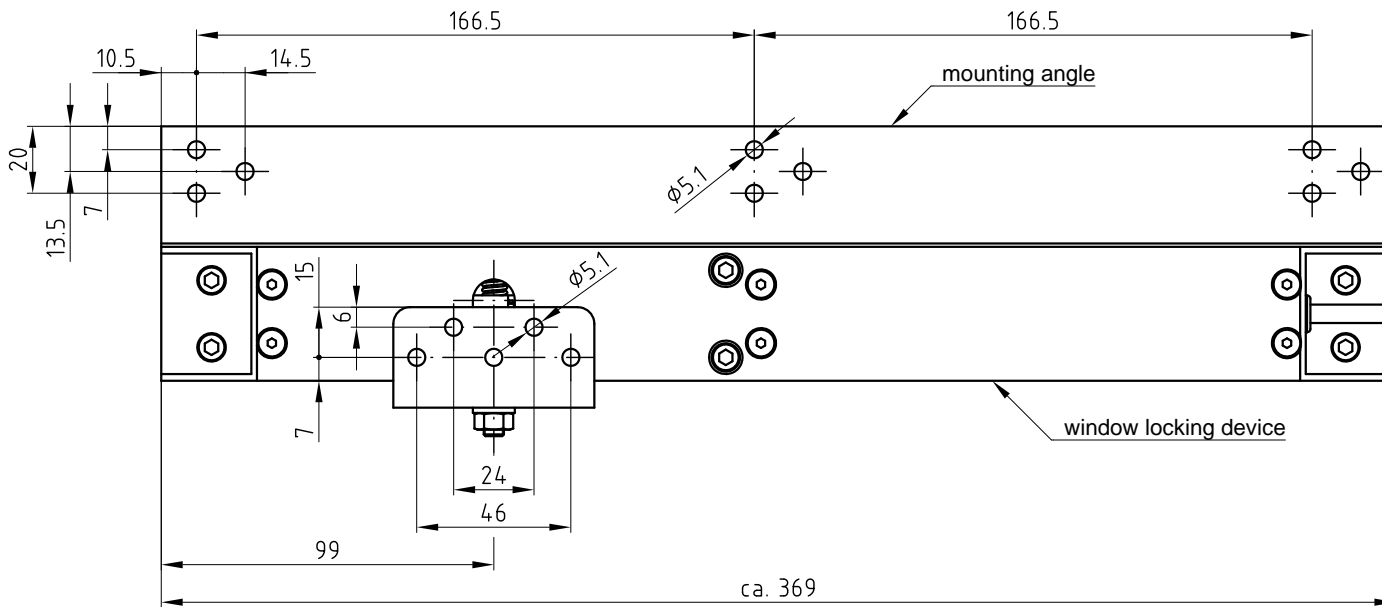
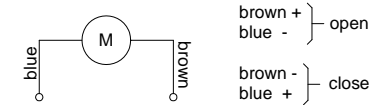
The rated current depends on the locking force - see table

locking force	rated current
1250N	0,8A
1000N	0,7A
750N	0,6A
500N	0,6A

**Scope of supply:**

The locking bolt is **NOT** included in the scope of supply and must be ordered separately!

**Circuit diagram:**



Diese Zeichnung ist Eigentum der  
 Fa. Grasl GmbH A-3454 Reidling, EuropastraÙ 1  
 Die Weiterverwendung oder Vervielfältigung ohne unser schriftliches Einverständnis ist verboten!

GRASL Pneumatic-Mechanik GmbH A-3454 Reidling Europastraße 1		Freimaßtoleranz nach DIN 7168:		Maßstab: 1:1		Werkstoff:	
				ID - Nr.:			
				Datum		Name	
		Bear.		07.04.2009		Simefzberger	
		Gepr.		14.06.2012		KW	
05 Schutzart		12.06.2012		SA		Norm	
04 Technische Hinweise		18.08.2011		SA			
03 Schutzart		04.11.2010		SA		Type:	
02 Text, Englisch		09.07.2010		SA		EFR	
01 Diverse Änderungen		01.02.2010		SA		Zeichnung Nr.:	
Zus.		Änderung		Datum		Name (Urspr.)	
						(Ers.f.) 03.008.DAT.03.04	
						(Ers.d.)	
						fachlich geprüft am	
						29.5.2002 KW	
						Blatt	
						BL.	
						Bezeichnung:	
						Data sheet	
						Electric window locking device EFR 1.22	
						for outward opening windows	
						Blatt	
						03.008.DAT.03.05-E	